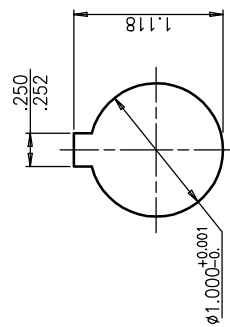


RATED VOLTAGE: D.C. 95V.
 STATIC TORQUE: 240 IN-LB
 POWER : 20 WATTS (20')



BORE & KEYWAY

REV.	DESCRIPTION	DATE		FINISH	DRAWN	2-1-97	TITLE	SHAFT MOUNTED CLUTCH MODEL: SC-425-10	MATERIAL
					CHECKED	SCALE	1=1		